

HERVEY BAY ORCHID SOCIETY Inc

NEWS AND VIEWS

October 2022

THE WONDERFUL WORLD OF ORCHIDS

No. 157

P.O. Box 26, Pialba Qld 4655

e- mail hbosinc1983@gmail.com

Web www.herveybayorchidsociety.com



Phalaenopsis rosenstomii

October Feature Plant' *Phalaenopsis*'



GENERAL MEETINGS:

Our general meetings are held on the FIRST Monday of the month unless otherwise notified. They are held in the Presbyterian Church on the corner of Denman Camp Road and Freshwater Street, Torquay. Doors open at 6:30pm for a 7:00pm start. Plants to be judged need to be tabled by 6.45pm

The next General Meeting is on **Monday 7th November 2022.**

The Guest Speaker for November is:

'David Murley'

" . Speaking on the subject of:

'Australian Native Orchids'

Feature Plant for November 2022 meeting is -

'Species & Odd Bods '

COMMITTEE MEETINGS:

Our committee meetings are usually held on the FOURTH Monday of the month.

Next committee meeting is Monday 24th October at 5.30pm at Presbyterian Church hall.

Please note - start time change

INTERESTED GROWERS MEETINGS:

These are informal gatherings offering cultural advice and information exchange which are usually held on the FOURTH Saturday of each month from 10am.

The next one for the year will be on

Saturday 22nd October 9 am at the Orchid House at the Hervey Bay Botanic Gardens. (Please see article in newsletter)

Everyone is welcome to attend. Bring problem plants and brag plants.

COMING EVENTS:

HBOS Show Helpers Bus Trip

15th October 6.30am sharp departure HB Transit Centre. Email to members who assisted at show to be forthcoming.

Bribie Island Orchid Society Show

Orchid House, 1st Avenue B.I.

7th October 2022

2022 QOS Spring Orchid Show

15 & 16th October 2022

Belmont Shooting Complex, Cleveland Rd.

'Nambour Orchid Society Species Show'

Buderim Uniting Church Hall

Saturday 5th November

19th November: STOCQ meeting hosted by South Burnett OS in Lutheran Church Hall, Thorn Street, Murgon

Getting to meetings!

If you would like to attend any of our meetings but are unable to get there by yourself, then let one of the Committee know and we will see if we can assist.

HBOS Inc. Executive and committee members elected for 2021

Patron	Ted Sorensen	
President	Graham Semmler	semmler@inet.net.au
Vice President	Heather Wehl	hwehl@yahoo.com
Secretary	Julie Taylor	jat909@bigpond.com
Treasurer	Darcy Walker	darcy@fluidindustries.com.au
Committee/Editor	Darryl & Leanne Coombes	leadarcoo@bigpond.com
Committee/Social Sec	TBA	
Committee	Janine Blaber	Terri Bade
Committee/Assist Treasurer	Miriam Garnham	Lyndal Semmler
Committee	Giles Blaber	Barbara Neumann
Committee	Sandra Twomey	
Committee & Assist Sec	Ross Skyring	

HBOS Spring Orchid and Garden Spectacular 2022

Julie Arthur OAM conducting one of our potting demos



The 2022 HBOS Orchid Show was once again a resounding success. Thank you to all those that helped make this a wonderful event.

You know who you are (Ed.)

Champion orchid winner- Keith Lydiate



Hugh Campbell, novice 3rd place . Well done Hugh!



VIP's and the President



Noel Joyce Mem. Trophy winner- Beth Payne



Award winning HBOS display.



Champion and Reserve Ch. Orchids.



Part of the wonderful kitchen crew hard at it.



NOVICE:**1 st** *Phaius* Lady Ramona Harris 'Looking at you'

D. Walker →

2 nd *C. Irene Finney* x *C.intermedia* var. Orlato

D. Moy

3rd *Gur. Skinneri* var. *alba* M. Lush**INTERMEDIATE:****←1 st** *Den. Chet's Choice* T. Dolkens**2nd** *C. unk* J. Gaddes**3rd** *C. Rosella's Orange Bud* H. Wehl**OPEN:****1st** *Rlc. Chungfong Apple* 'Chief Jade' J. Arthur →**2nd** *Rlc. Golden Canefields* x *Rlc. Toshnie's Magic*

G. Blaber

3rd *Ascda. Rak Jai* x *Ascda Yip Sum-Wah* D. McKenna**MASTERS:****←1 st** *Paph. Prince Edward of York* T. Bade**2nd** *Phal. Tying Shin New View* x *Phal. Chian xen* 'Super Idol' G. Johnston**3rd** *Rth. Napps Tradition* L. Napper**SPECIES:****1 st** *Epi. stanfordianum*. D. McKenna →**2 nd** *Den. thysiflorum* K. Lydiate**2 nd** *Paph. esquirolei* T. Bade

AUSTRALIAN NATIVE

1st	<i>Den. discolor</i>	L. Napper →
2nd	<i>Phaius tankervillea.</i>	R. Colbran
3rd	<i>Sarc. dilatus</i>	D. Murley



JUDGING RESULTS - JUDGES CHOICE

NOVICE:	<i>Cym. Devon Orc' Robyn'</i>	70 Points	M. Garnham
INTERMEDIATE:	<i>Rlc. Taiwan Chief Bell 'Wish'</i>	71 Points	J. Gaddes
OPEN:	<i>Rlc. Chungfon Apple 'Chief Jade'</i>	71 Points	J. Arthur
MASTERS:	<i>Rth. Napps Tradition</i>	72 Points	L. Napper
SPECIES:	<i>Den. farmeri</i>	72Points	K. Lydiate
AUST. NATIVE:	<i>Den. discolor</i>	69 points	L. Napper
FEATURE PLANT:	<i>Phal. Unk.</i>	N. Pittman & N. Gibson	

Cym. Devon Orc' Robyn'



Rlc. Taiwan Chief Bell 'Wish'



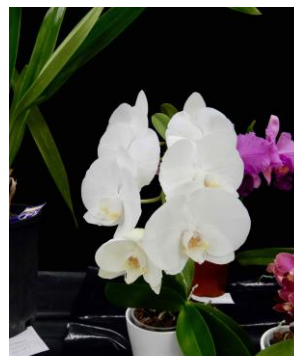
Rlc. Chungfon Apple 'Chief Jade'



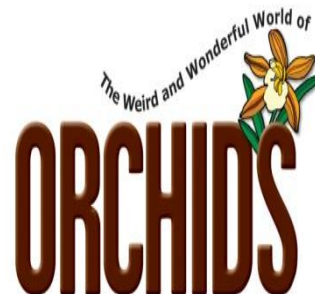
Den. farmeri



Feature Plant- *Phal. unk.*



HERVEY BAY BOTANIC GARDENS AND ORCHID HOUSE



Anyone with flowering plants who would like to loan them to the Botanical Garden's Orchid House please contact the Orchid House on 4125 9715

INTERESTED GROWERS GROUP MEETING

The IGG on Saturday 22nd October will be held at the 'Rotunda' adjacent to the 'Orchid House' unless advised otherwise, commencing 10am. Tea and Coffee will be provided but please bring your own seating arrangements, a hat, sun protection and as we are hosting 'Childers & Isis Orchid Society' (30 members) as well as 'Calliope OS' (approx. 15 members) to this event, 'a plate for morning tea would be much appreciated. (Remember the lovely morning teas both Societies have provided for us in the past?) Members are advised that there will be an opportunity to sell their plants to our members and the visitors. Please bring your own sales tables and floats as required and note - this will be cash only transactions with no commission to society.

Set up time will be 9.00am with the visitors arriving approx. 9.30am. They (and us) will then have morning tea and the opportunity to purchase your orchids with the meeting commencing 10.00am and concluding at approx. 11.15am with our raffle (some point of flowering orchids surplus from our recent show included). The visitors will then depart for the rest of their itinerary.

More information to come to members by email from our secretary in due course.

If you have an interesting article on orchids to share in our newsletter, please feel free to contact the Editor and we will hopefully include it in a future newsletter.

HBOS Shirts are available from 'TUFF STUFF' 2/109 Boat Harbour Dr.
Just go in, select your size, make payment (\$30 including embroidery, Pocket is extra \$5, and name included at no cost if desired) and shirts should be available 2-3 weeks

Contact Leanne Coombes ph.0418132175 for more information.

Please note limited supply of original shirts are still available at limited sizes, now reduced to \$20 each

Lucky Door Prize and Competition Results

- The lucky door prize winner for June was- **Giles Blaber**
- The lucky competition winners were – **M. Morgan, D. Chapman, T. Moy, D. McKenna, M. Garnham. P. Barker. V. Trace & P. Rogers.**



Like us on
Facebook

Phalaenopsis rosenstromii

Native Moth Orchid

.Distribution

Occurs in north-eastern Queensland from Iron Range to Mt Spec.

Altitude: 200-500 m.

Description

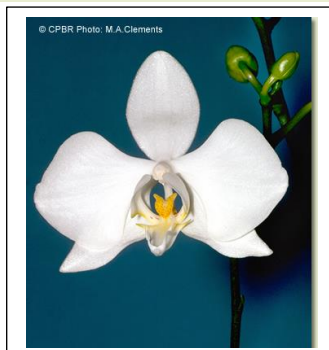
Epiphytic or **lithophytic** herb forming semi-pendulous clumps. **Plants** usually consisting of single growth with long thick flat roots. **Stems** 10-30 cm long. **Leaves** 2-8, crowded, scattered along stem, pendulous, distichous, alternate, sessile, bases sheathing stem and imbricate; lamina oblong to obovate, 15-30 cm x 4-7 cm, thick, fleshy, dark green, apex unequally emarginate. **Inflorescence** an axillary panicle, arching, 300-750 mm long, stiff, sparsely branching near apex; pedicels 20-30 mm long. **Flowers** 2-10 per branch, resupinate, correct, star-shaped, 60-70 mm x 50-80 mm, nearly flat, white. Sepals and petals spreading widely, petals wider than sepals. **Dorsal sepal** ovate, erect, 30-40 mm x 20 mm, narrow at the base. **Lateral sepals** free, divergent, ovate, 30-40 mm x 20 mm. **Petals** very broad, 30-40 mm x 30-40 mm. **Labellum** 25 mm long, white with yellow and red-brown streaks and bars, 3-lobed; lateral lobes incurved, 15-20 mm x 10-13 mm, white; midlobe 16 mm long, tapered, apex with 2 curved filiform appendages. **Callus** yellow with red-brown markings. **Column** 7 mm long. **Column foot** 5 mm long, at right-angles to the column. **Capsules** correct, dehiscent.

Ecology

Occurs in rainforests in humid airy situations on sheltered slopes and in gullies, in deep gorges and close to waterfalls and streams, growing on trees, rarely rocks. The attractive flowers are long-lived, and the panicles can stay green and produce secondary inflorescences for 2-3 years.

Highly localised.

Flowering period: December-April



Hervey Bay Orchid Society Member Profile.

Presenting Sandra Twomey and Miriam Garnham

Sandra and Miriam both have similar tales to tell relating to their involvement with orchids.

Sandra's first exposure to orchids was in 1983 when a neighbour's father in Melbourne, who had a large orchid collection introduced her to the world of orchids. Sandra remembers assisting him repot Cymbidiums each year after Melbourne Cup Day. Sandra also has fond memories of assisting Ringwood Orchid Society at their Spring Show setting up a winning display with the theme 'Americas Cup'

Sandra and husband Peter relocated to Hervey Bay in 2019, where she visited the 2021 HBOS Spring Show and was very impressed with what she saw. After joining the Society, Sandra went on the Show Helpers Bus Trip (as a paying attendee) to Calliope and mentions 'being taken under the wing' by 'Heather and Julie'. Next thing you know Sandra is on the HBOS Committee (a very valued member – ED.)

At home Sandra and Peter have converted a spa area into a temporary Shade House to harbour her collection of about 30 orchids of mixed varieties. (Apparently, Peter is worried that this might lead to a larger structure). Sandra is concentrating on Vanda, Soft Cane and Australian Native Dendrobiums.

Sandra's tip to novice growers is 'Join an Orchid Society' People are free with knowledge and happy to assist.

Miriam's first experience with orchids was on her Honeymoon with **Allan** in Lae Botanic Gardens, New Guinea in 1963. The memory of beautiful Vanda's still lingers.

Miriam started buying orchids in 1983 and had a shade house built. She joined Redcliffe OS in 2016 where she really started to learn about orchid culture. Vandas are Miriam's favourite orchid but after relocating to Hervey Bay, she now has a collection of about 300 orchids (all sorts) in her small backyard at Urangan.

Miriam has always been a keen garden enthusiast and has held many positions in the gardening world such as – Queensland Council of Garden Clubs 'Ambassador'

" " " " 'President

Secretary Redcliffe OS

Assistant treasurer HBOS 2022

Miriam's tip for Novice growers is similar to Sandra's – 'Join a society, best way to get information.

Well done! Sandra and Miriam keep up the good work.



**An Orchid Book Library is available at the Church Hall for all members to use.
Please see our librarian **Thuy Dolken** at the General Meetings to sign out borrowings.
Check out the many Orchid books and magazines available.**

Sender:

Hervey Bay Orchid Society, PO Box 26,

Pialba QLD 4655

Some more of our fantastic show sponsors

